



上海大学

2015年度本科教育教学质量报告



“ ”

2015

“ ”

2015

- 1. 2011-2012 2012.12
- 2. 2012-2013 2013.12
- 3. 2013-2014 2014.12
- 4. 2014-2015 2015.12
- 5. 2012 2012
- 6. 2013 2013
- 7. 2014 2014
- 8. 2015 2015
- 9. 2012 2012
- 10. “ ” 55 -76 2012-2015
- 11. 2012.09
- 12. (2010-2020 ) 2010.06
- 13. (2010-2020 ) 2010.10
- 14. “ ” 2020 2010.12
- 15. 2010.09
- 16. 2006.07

**2016 5**





2011

2011 310 290

11.43% 9351 10558

2015 12

307 212

2015 406 370

36 9.73% 100 24.63% 124

30.54% 896

2015 3 2

5 “ ”

2015

2014-2015 2014 71-76

2015

2015 90.98 90.99

2014 70% 2013 69% 1

2015 5415 97.70% 5425 16.83% 15.33%

1.5% 2015 99.07% 98.55%

0.52% 16.67% 15.68% 0.99%

2014 69% “211” 2014 67%

2 2014 95% 2013 94%

“211” 2014 92% 3

13      42%      2015      20      60      2014  
3      5      2014      38  
54      551      98      28

2000      692

”

“



..... - 1 -  
..... - 1 -  
.....



1.

“ ”

2.

3.

1

4.

→ “ ” “ ”

→ ,

2015

1.

→ 2015 ,

	79.58%	5.7	
2014	432	471	9.03%

→ 28 447

76 "

"

→ 35

7302

“ ”

→ “ ” 2

3 ,“ ” 1 “ ”

→ 2017 “ ”

13

4.

→ 26 3

7 1 509

→ 93 119 215

“ ” 64 64 ;

→

731 18% 4087 5%

1.

→ 2015 20

60 2014 42%

→

2014

→

2014 2.19%

2014 19.30%

2.

→ 54 98

2014 2015 76

→

28

---

→ 3 5 38 13 551

**3.**

→ “ ”

→

→

**4.**

→

→

2000

→ 735

2016

**1.**

→

→

→ 2016

2.

→ “ ”

→ “

” “  
” A400

→ “ ” “ ”

3.

→

→

10%

→ 500

,



**1.**





1.

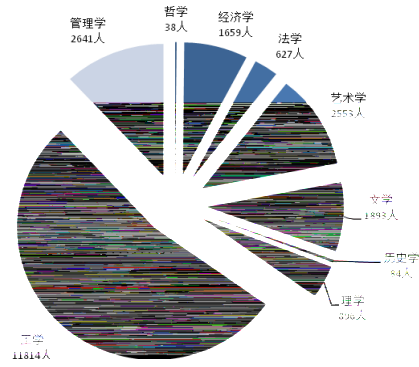
/

/

22205

10574

831



2-1

2015

2.

/

1



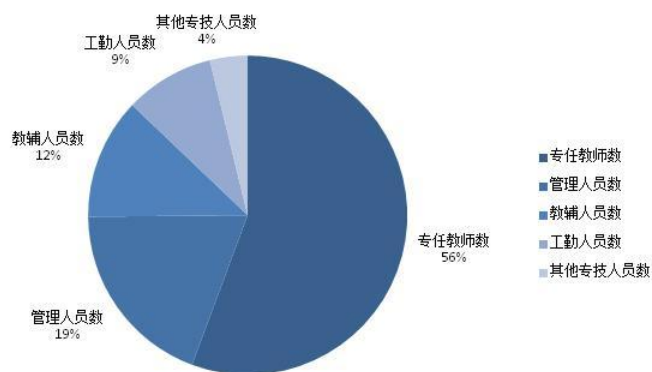
2

3

4.

1		41	8000	4
2		870	5000	
3		51	8000	
4		4	5000	
5		95	1000	
6			10000	
7		6992	500-4000	
		8053		

1.



2-2

5108

32

2.

/ /

1		2844	18.47	3129.5 <sup>1</sup>
2		979	59.04	
3		627	92.19	
4		463	124.84	
5		195	296.41	
		5108		57800.9 <sup>2</sup>

1

=

+

\*0.5

2

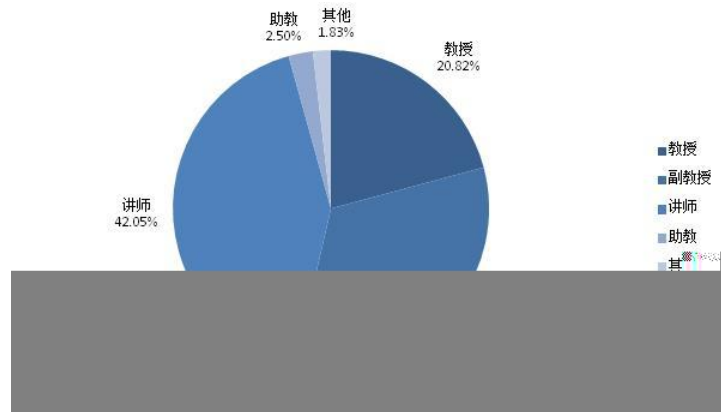
“2014-2015

”

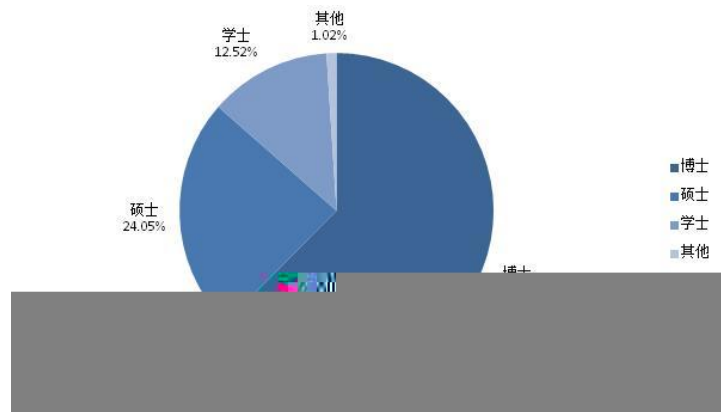
2015 9

3.

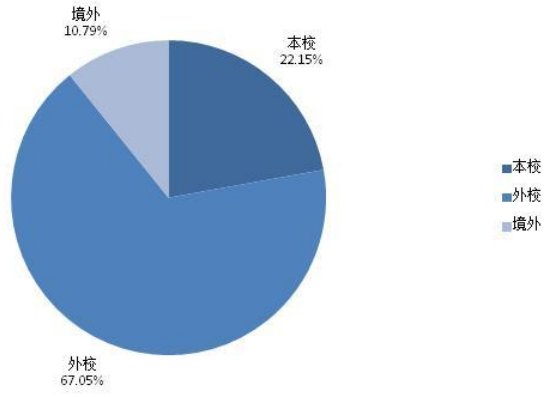
/ /



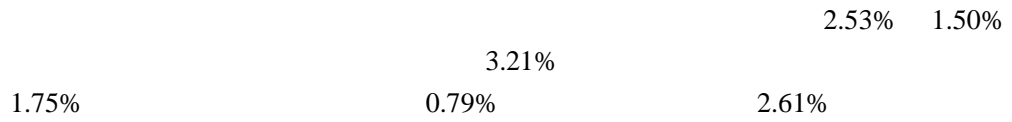
2-3



2-4



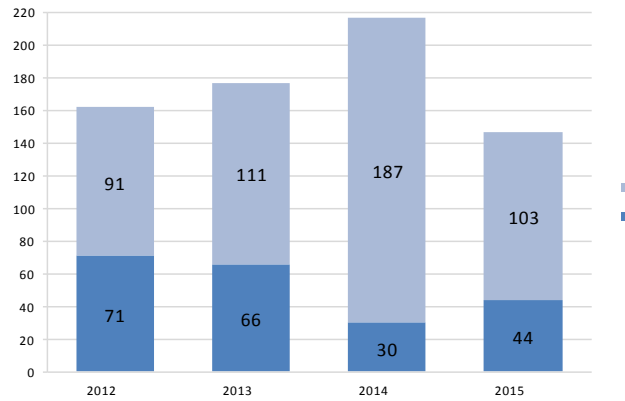
2-5



4.

2012

2015



2-6 2012-2015

2015

[ (2004)2 ]

	2015	2014	2004
	18.47	↓	18
	88.9%	↑	30
	15.78	↑	14

	24229.26	↑	5000
	66.48	↓	100
	54%	↑	30
	47.82	↑	54
	9.78	↑	6.5
	48.11	↓	10
	7.6%	↓	10
	0.8	↑	4

1. "2014-2015

"

2. 57800.9 38433

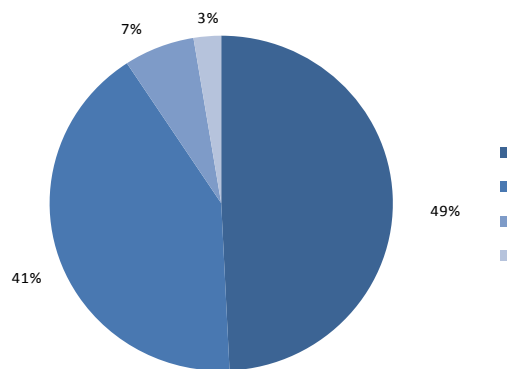
3129.5

2015 9

### 1.

2015

270,252.60



2-7 2015

57,884.96

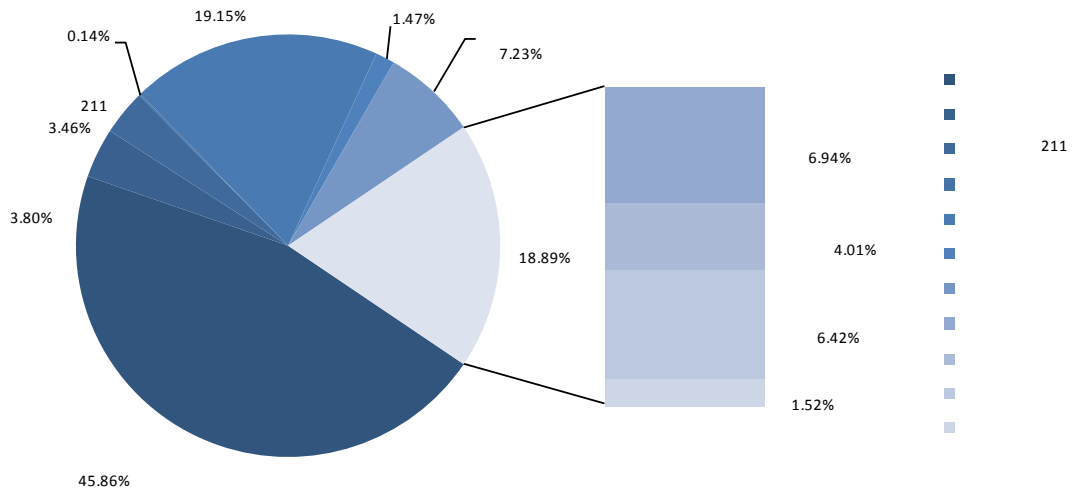
2

2

### 2.

2015

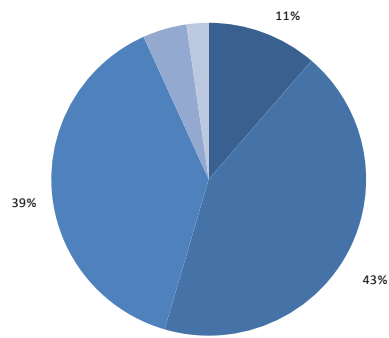
267,627.81



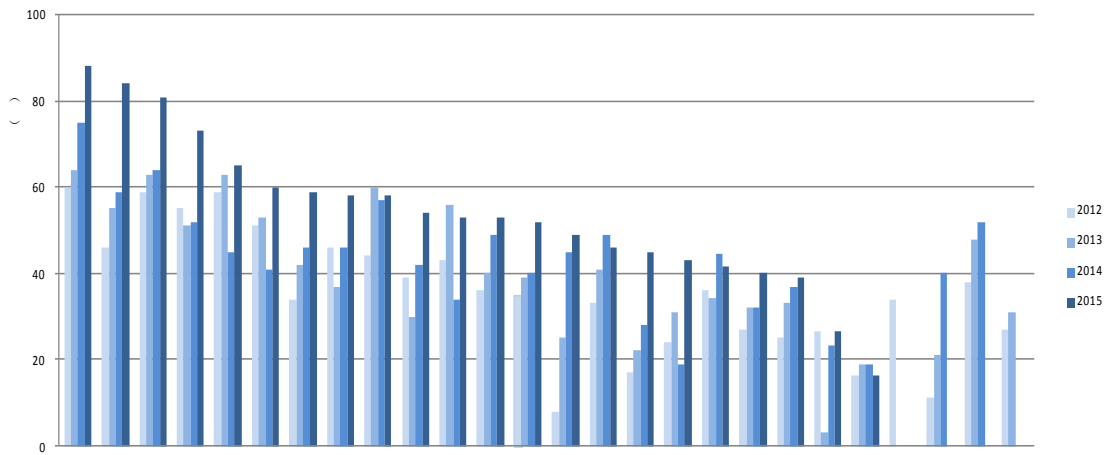
**2-8 2015**

5.37 3.74 211 1.69 2.26

247 44 25 3

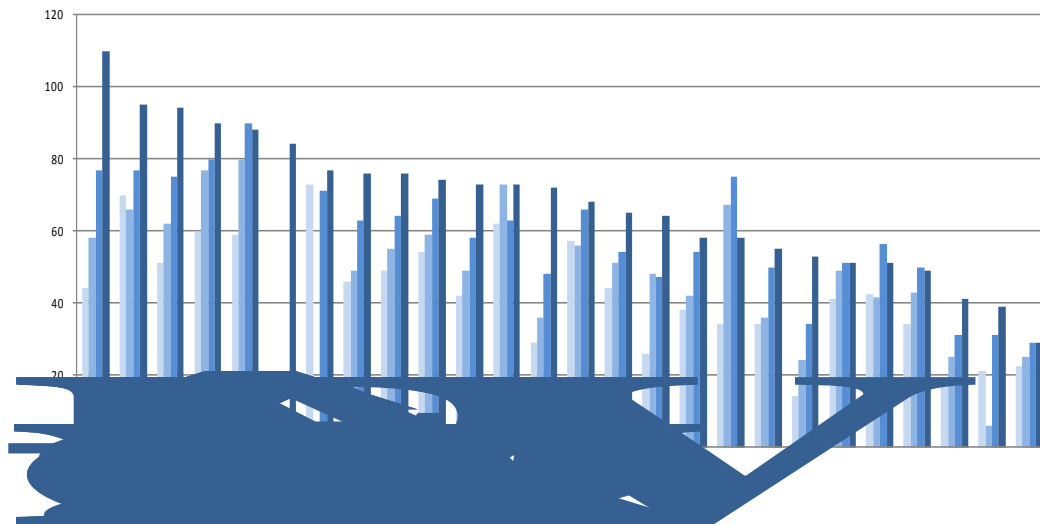


**2-9**



**3-1**

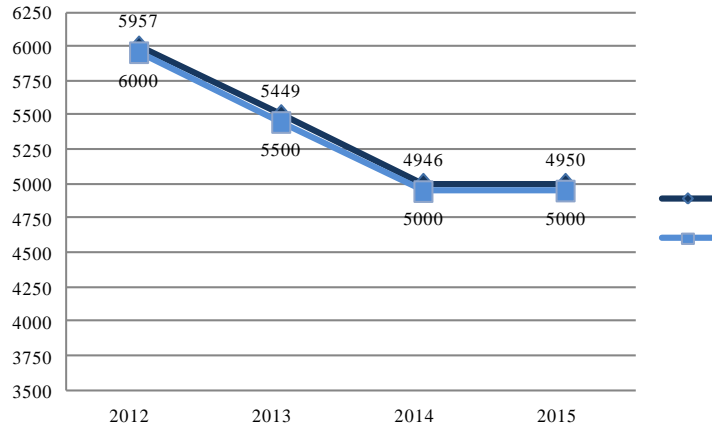
**2012-2015**



**3-2**

**2012-2015**

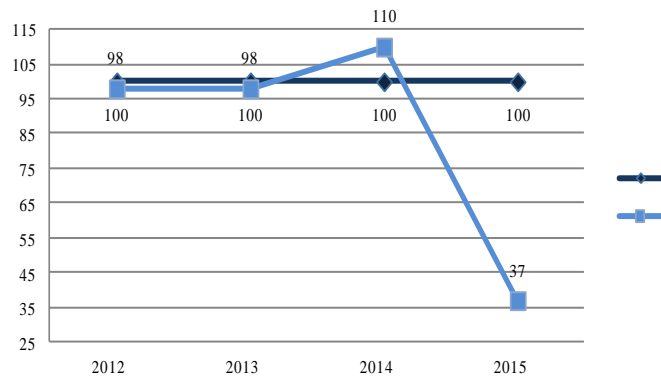
2012-2015



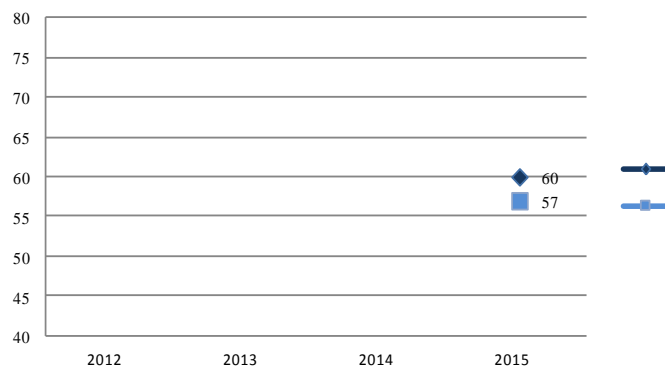
3-3 2012-2015 /

2012

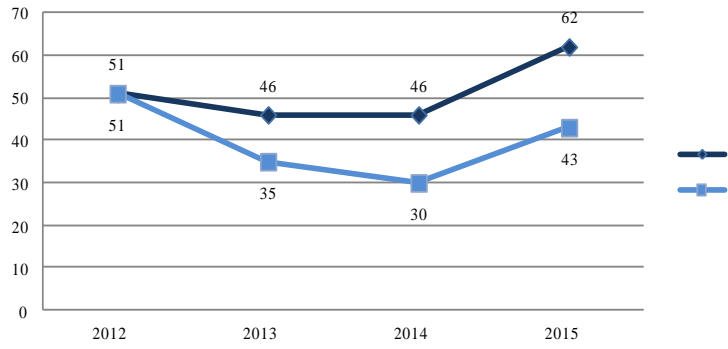
2015



3-4 2012-2015 /

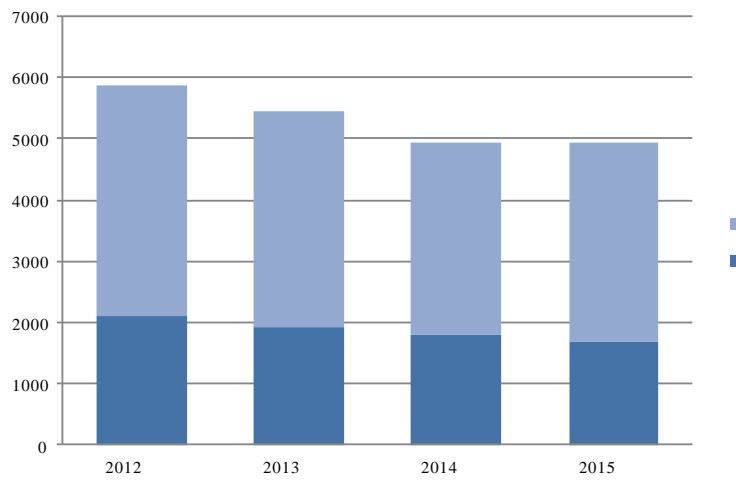


3-5 2012-2015 /



**3-6 2012-2015 /**

**2012 -2015**

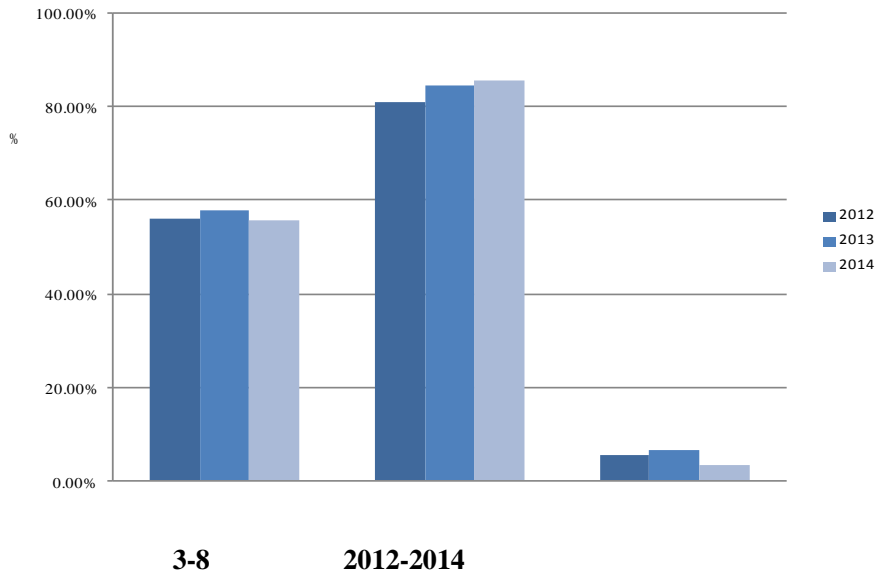


**3-7 2012-2015**

**2014**

2015	2014
85.5%	100%
2013	
100%	100%
2015 11	2014
3332	4946
2014	

3489 2014  
96.399% 2013 94.868%



**1. 2012**

	22	2	94	75	30	10	60	290
	32	2	95	75	30	10	50	290
	36	2	70	95	30	10	50	290

- 290
- 2 1
- 10
- 15%
- 25%

**2. 2013**

	22	2	95	75	30	10	60	290
	32	2	95	75	30	10	50	290
	36	3	70	95	30	10	50	290

2012

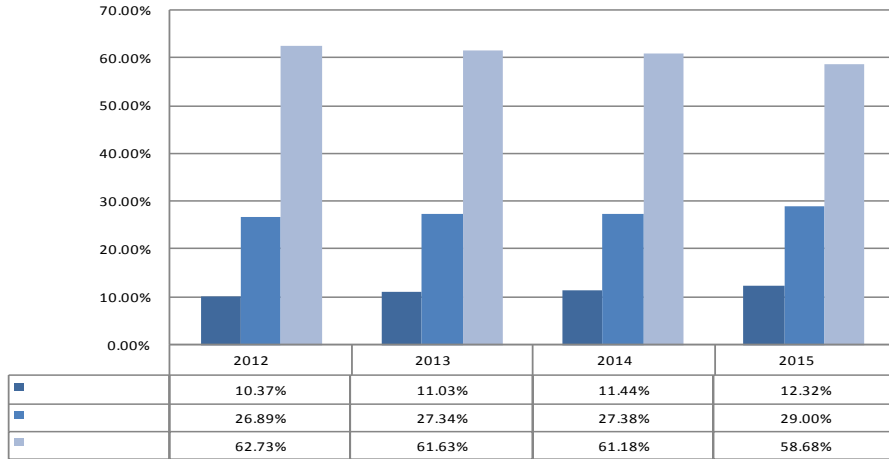
**3. 2014 2015**

	22	2	95	70	[25,30]	10	60	290
	32	2	95	70	[25,30]	10	50	290
	36	3	70	90	[25,30]	10	50	290

2012

1.

1



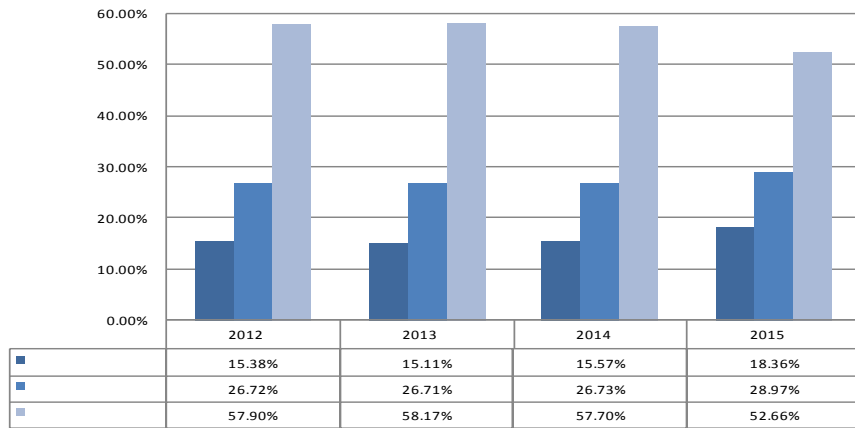
4-1 2012-2015

- 
- 
- 

$$= \quad /$$

$$= \quad /$$

2



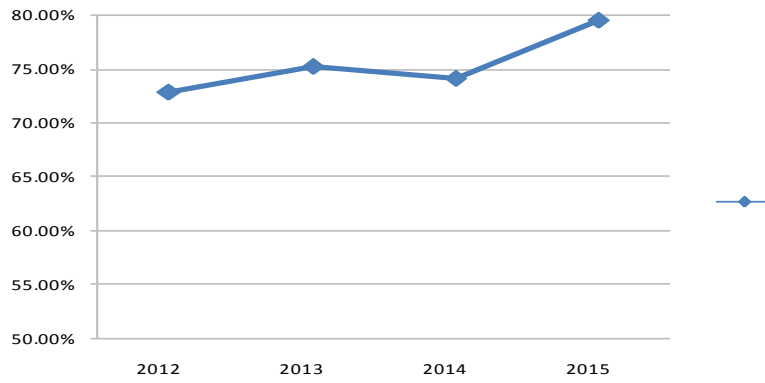
4-2 2012-2015

- 
- 
- 

$$= \quad /$$

$$= \quad /$$

3



4-3 2012-2015

● = /  
 ● 12 31  
 ●

2.

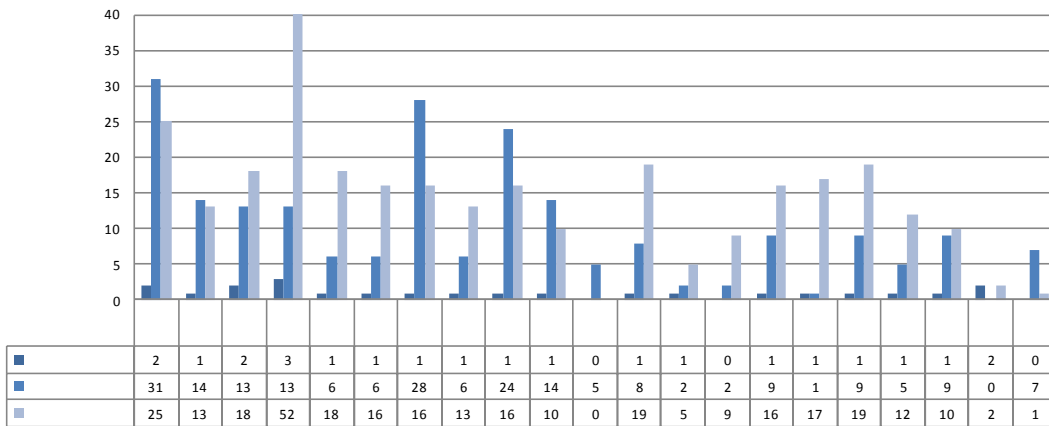
2011

2015

307

23

212



4-4

2015.12

● 2015 12 31  
 ● 4-4



3.

	2013-2014			2014-2015		
	15438	4296	11142	16864	4149	12715
	2181	0	2181	1906	0	1906
	1683	0	1683	740	0	740
	19302					





” 2015 “ ” “ ”2.0 ——“ ”

“ ” “ ” “ ” “ ”

2015

87

2

“ ”

“ + ” “ + ” ”|

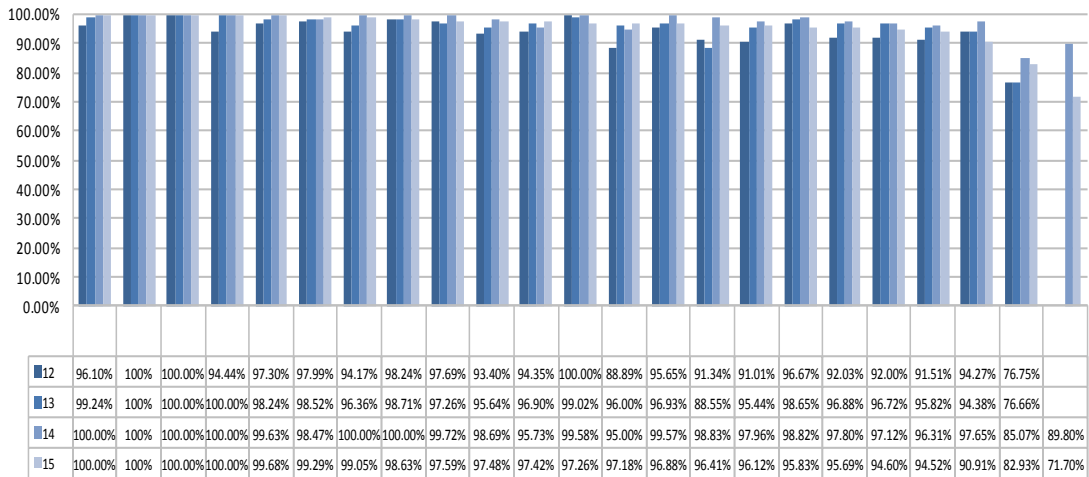




311

3

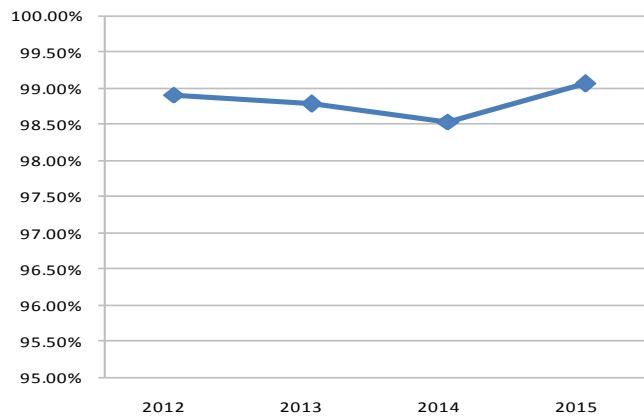
5-1 2012-2015



5-1 2011-2014

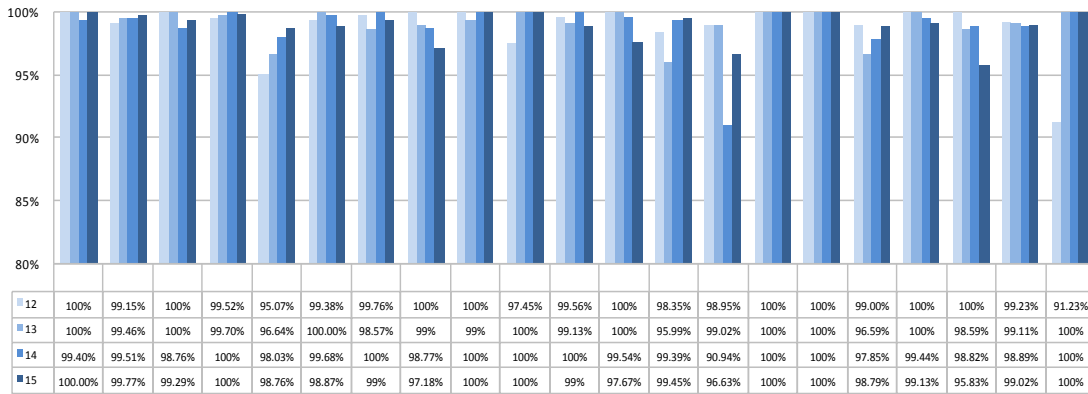
1. 2014
2. = /
3. 8 30

2012-2015 5-2



5-2 2012-2015

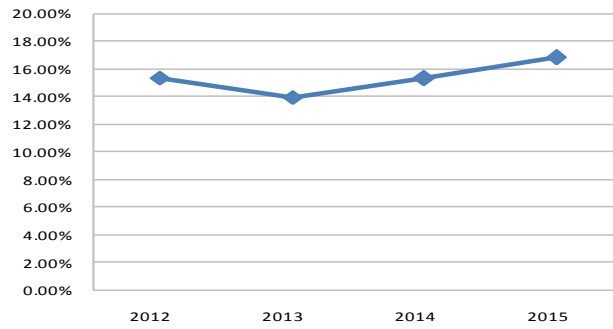
5-3



5-3 2012-2015

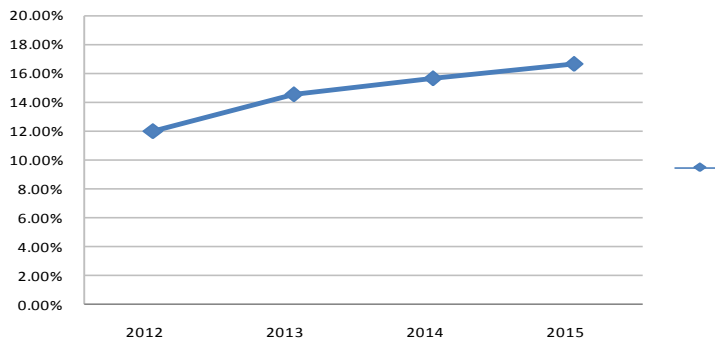
2015 9

5-4 2012-2015



5-4 2012-2015

5-5 2012-2015



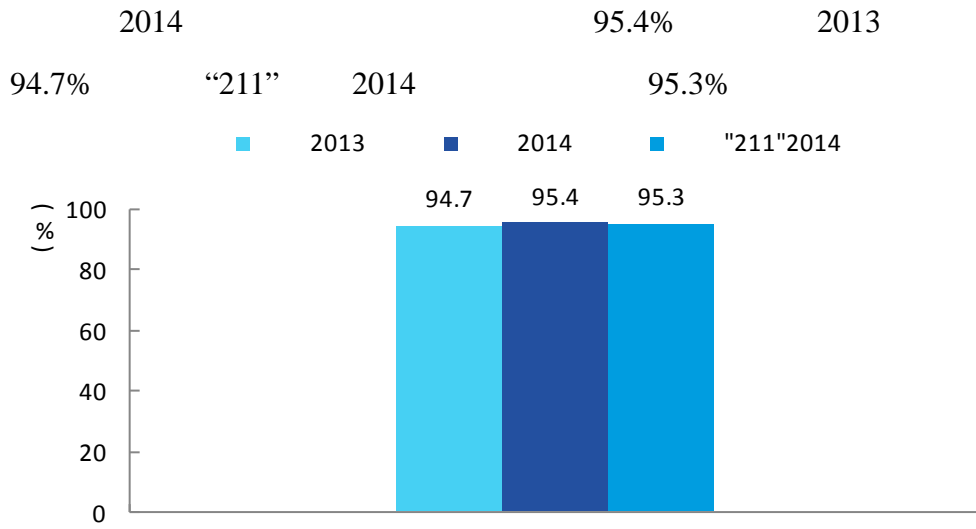
5-5 2012-2015

2011 2014

2012 2015

1.

2



2014

95.4%

2013

94.7%

"211"

2014

95.3%

■

2013

■

2014

■

"211"2014

(%)

100

80

60

40

20

0

94.7

95.4

95.3

5-6

2014

2013

"211"

2014

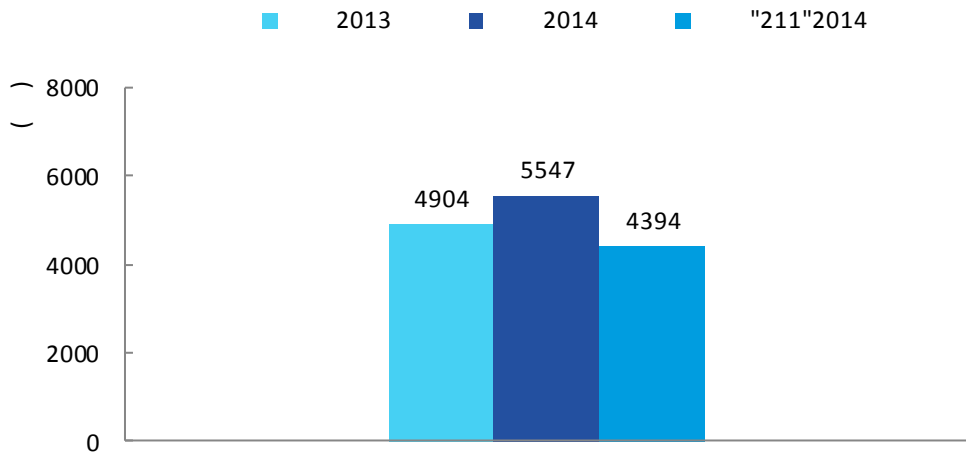
3

2.

4

1

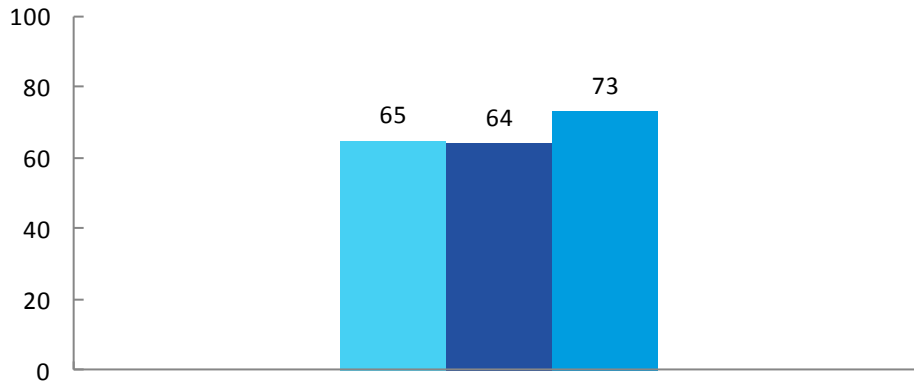
2014 5547 2013  
4904 643 “211” 2014 4394 1153



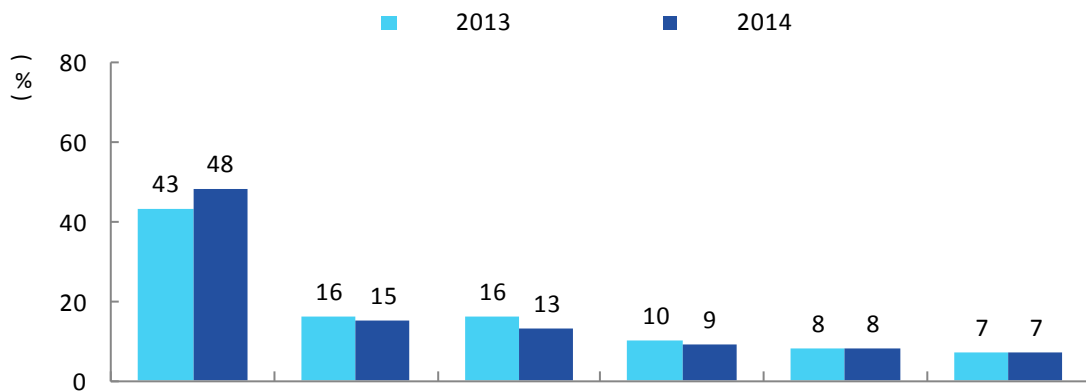
5-7 2014  
2013 “211” 2014 5

2

2014 “211” “ ” 2013 65% 64% 73% 9 48%



5-8 2014 %



5-9 2014 %

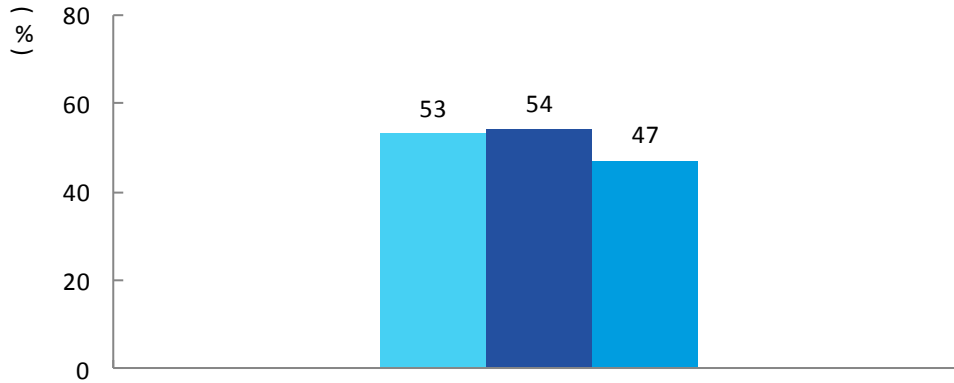
3

6

2014 54% 2013 53%

“211” 2014 47% 7

■ 2013 ■ 2014 ■ "211"2014



5-10 2014 %

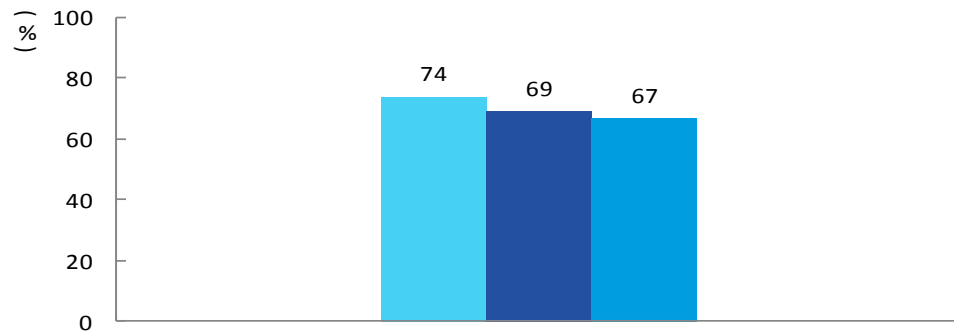
4

7

2014 69% 2013 74% 5

“211” 2014 67% 2

■ 2013 ■ 2014 ■ "211"2014



5-11 2014

**1.**

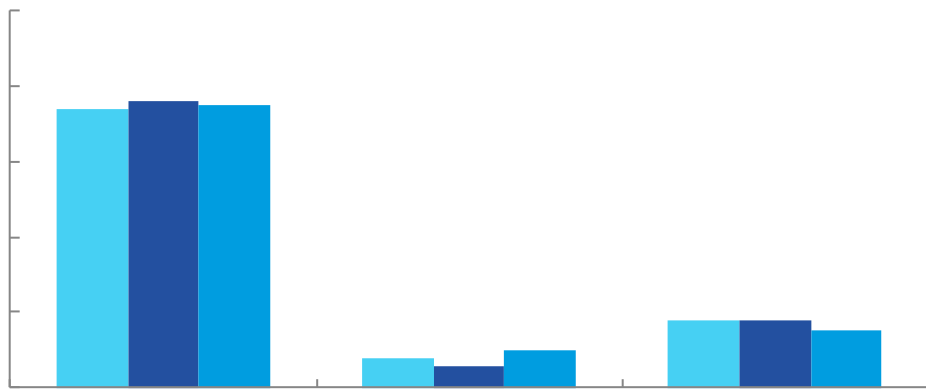
**8**

2014 76% 2013 74%

2 “211” 2014 75%

6% 2013 8% 2 “211” 2014 10%

4



5-12 2014 %

**2.**

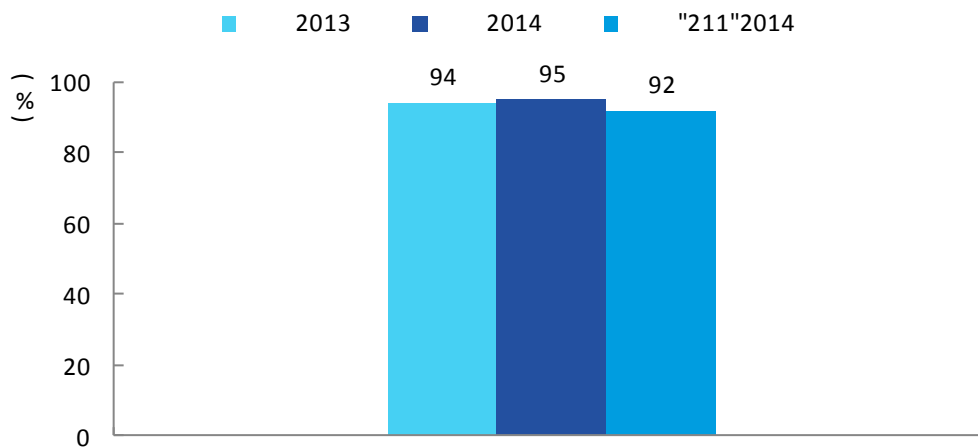
**9**

2014 95% 2013 94%

“211” 2014 92% 3

---

8									
	"	"	"	"	"	"	"	"	"
9				"	"	"	"	"	"
"	"	"	"	"	"	"	"	"	"
									"
"	"	"	"	"	"	"	"	"	"
"	"	"	"	"	"	"	"	"	"



5-13 2014 %

10

1.

11

2014

5-1 2014

10

	5-1	2014	10	"211"
		%		
/ / / /		10.6	6446	5268
		8.6	6434	5403
/		7.9	4630	4010
		6.5	5374	4432

---

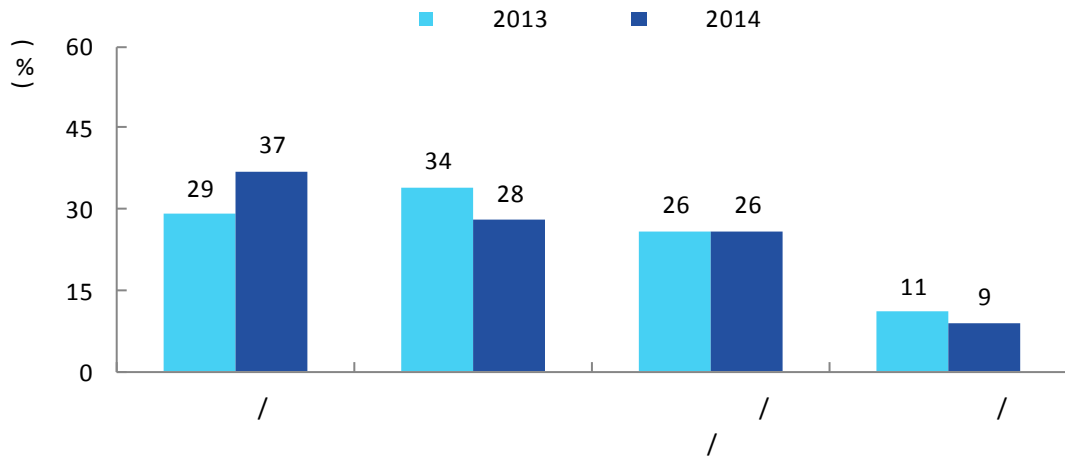
			<b>"211"</b>
	<b>%</b>		
	4.6	5396	

**3.**

**13**

**1**

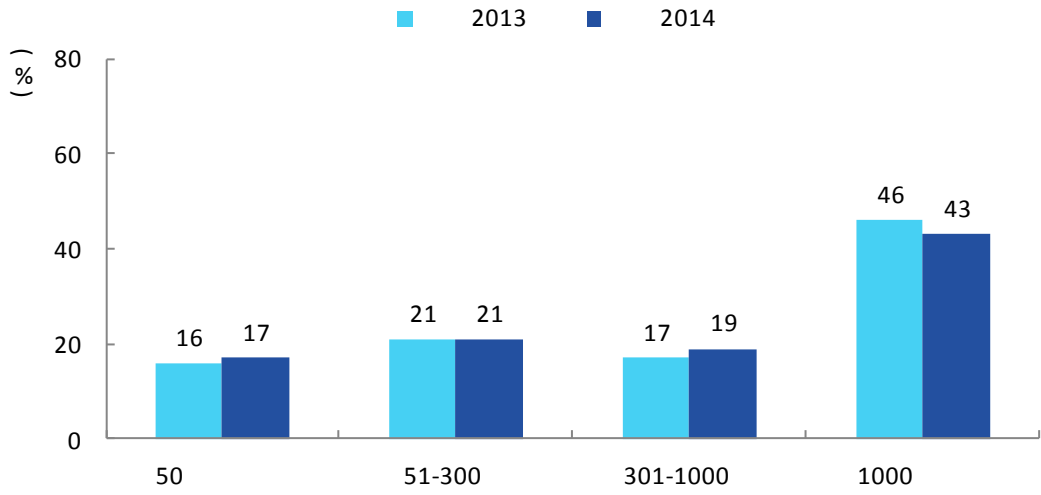
2014 / 37%  
 2013 29% 8 / /  
 6095



5-14 2014  
 NGO 1%

**2**

2014 1000 43%  
 2013 46% 3



5-15 2014

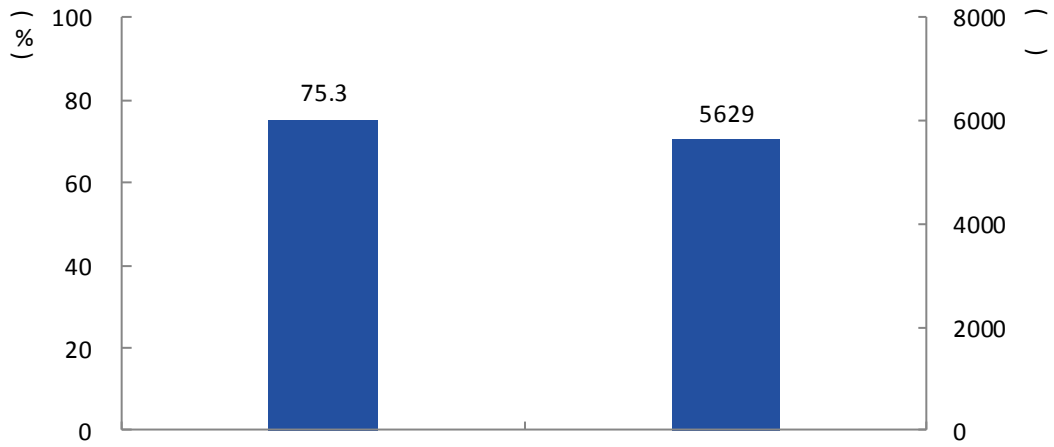
4.

2014  
5629

75.3%

2014

40%

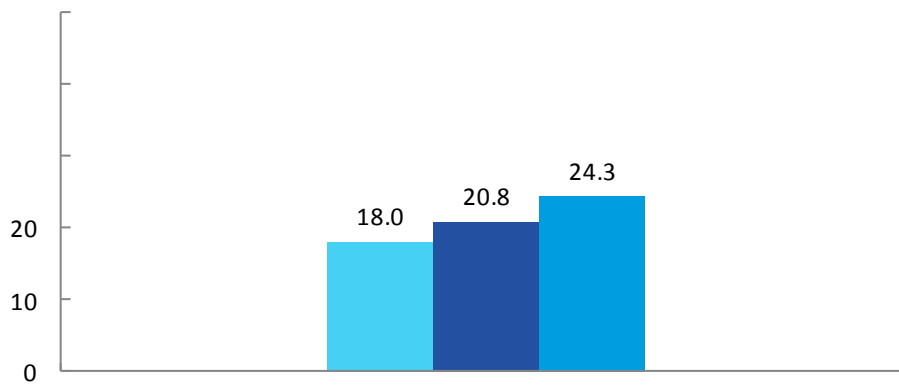


5-16 2014

1.

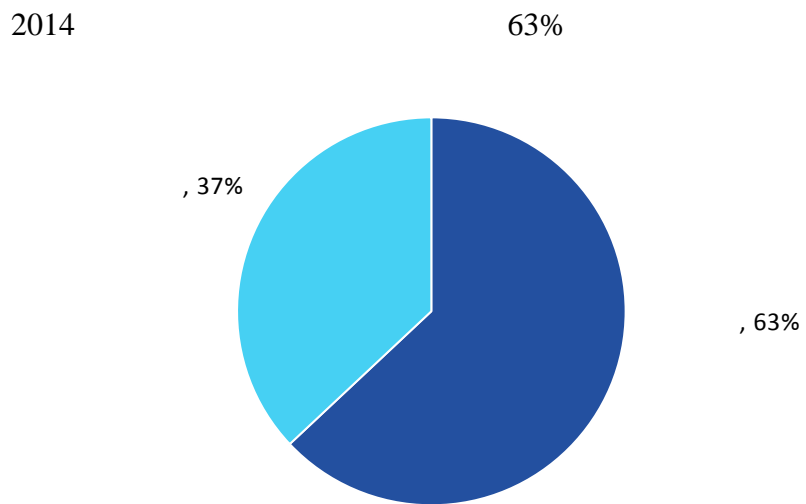
1

2014 20.8% 2013 18.0%  
2.8 “211” 2014 24.3% 3.5



5-18 2014

2

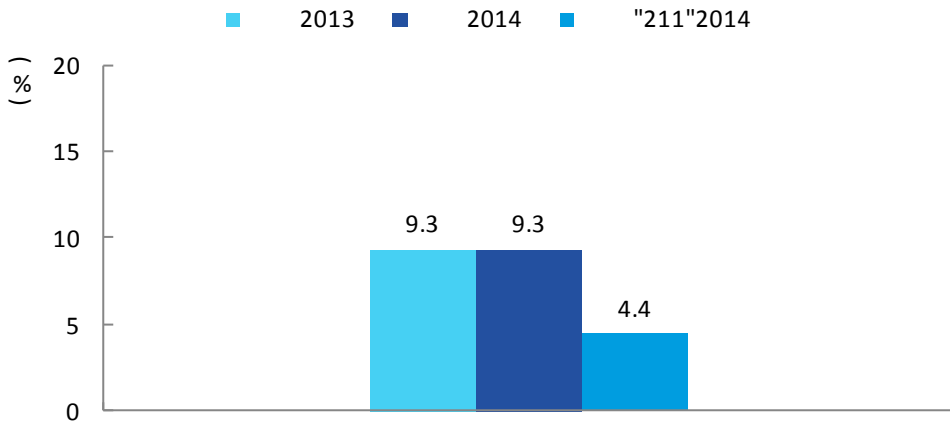


5-19 2014

2.

1

2014 9.3% 2013 9.3%  
“211” 2014 4.4% 4.9



5-20 2014

2

2014 “ ” 28%  
“ ” 27%

2015

71-76 "

" " 2014-2015 " 2014

" "

2015

1.

2014 74.18% 2015 79.83%

2015 100%

2.

2015

10 37

2015 28 230

46 689 5

16 4499 540

3.

2015

90.98% 2014

96.40% B+ 50.45%

4.07%

“ ”

2015

10 7 10 100%

4.

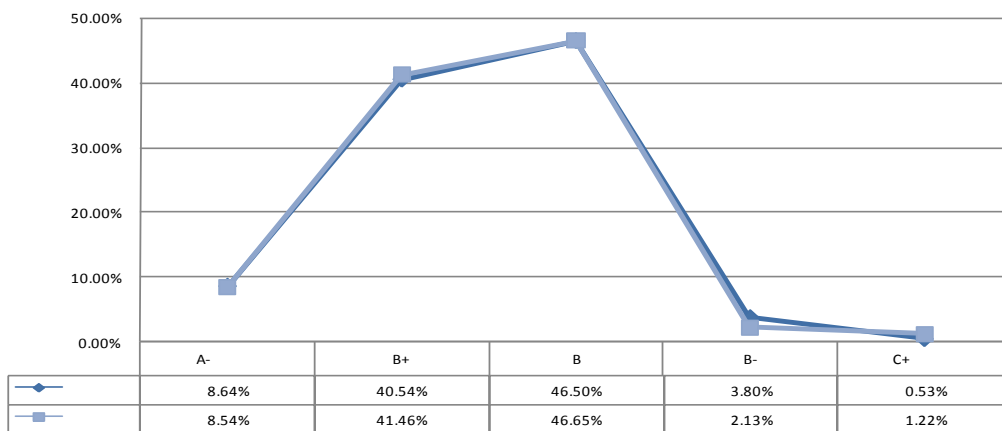
65 16

( )

2015

1712 18.31%( 9351 )

1384 328



6-1 2015

“ ” 71-76

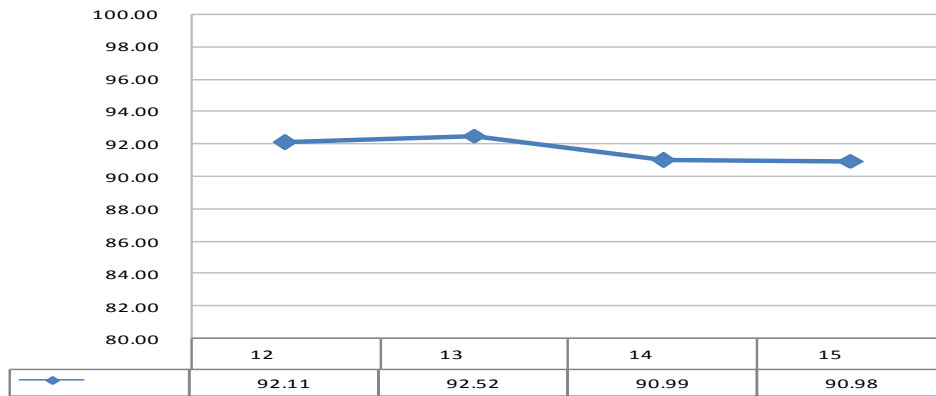
2014-2015

2015-2016

( )

1.

1



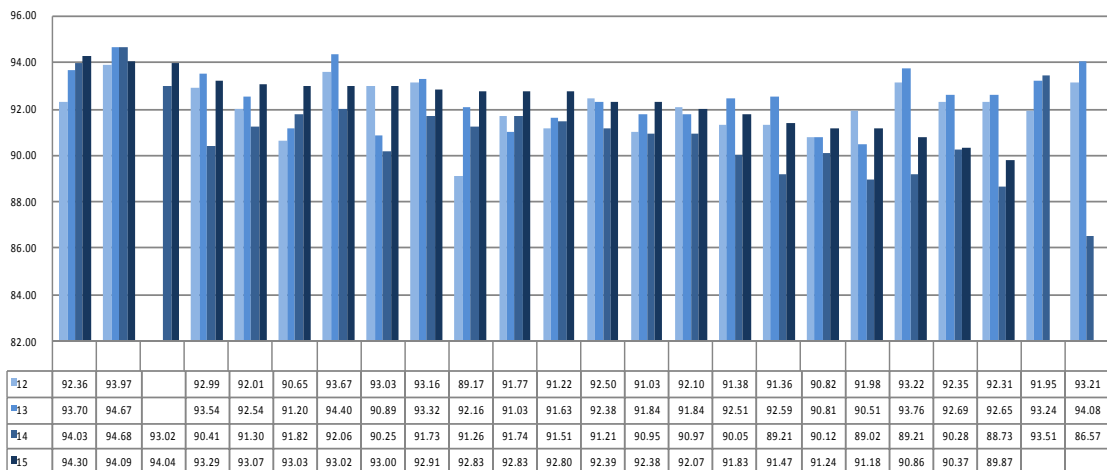
6-2 2012-2015

2012-2015

2

2015

6-3



6-3 2012-2015

2.

2015 9

“ ”

6-1 2015

6-1

	14-15	292	170	58.22	23	7.88	173	59.25	16	5.48
	15-16	2005	1084	54.06	295	14.71	1127	56.21	169	8.43
	15-16	1194	611	51.17	114	9.55	630	52.76	75	6.28
	14-15	7638	3992	52.27	833	10.91	4153	54.37	690	9.03
	15-16	5136	2664	51.87	731	14.23	2892	56.31	522	10.16
	15-16	4775	2193	45.93	575	12.04	2339	48.98	433	9.07
	14-15	961	472	49.12	104	10.82	505	52.55	83	8.64
	15-16	2881	1532	53.18	346	12.01	1605	55.71	253	8.78
	15-16	3053	1509	49.43	300	9.83	1603	52.51		

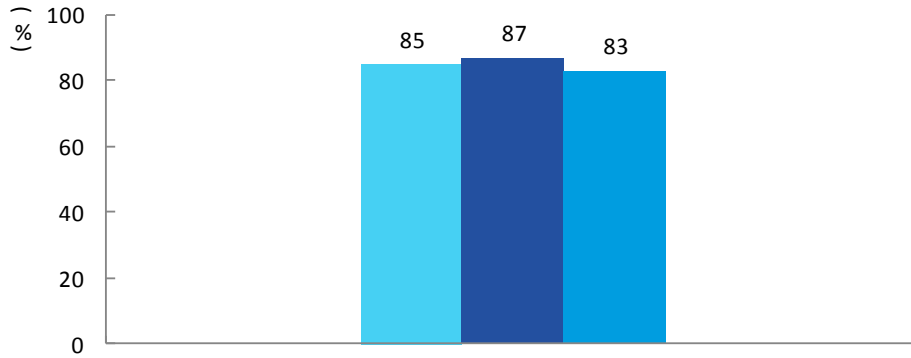
( )

1.

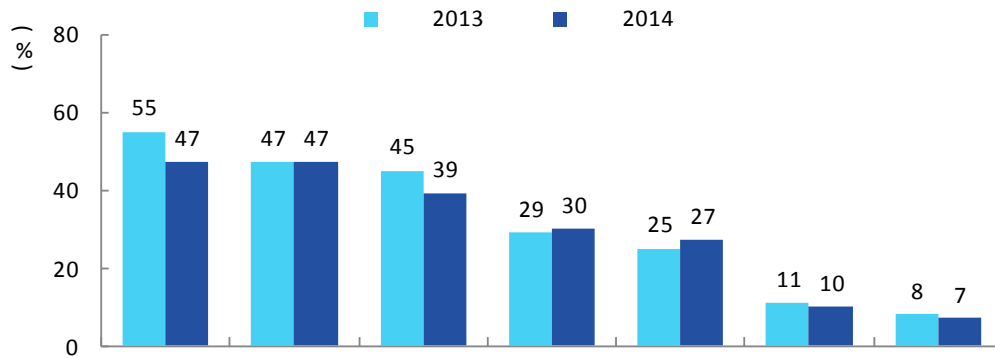
2014 87% 2013 85%

2

“211” 2014 83% 4  
 ■ 2013 ■ 2014 ■ "211"2014



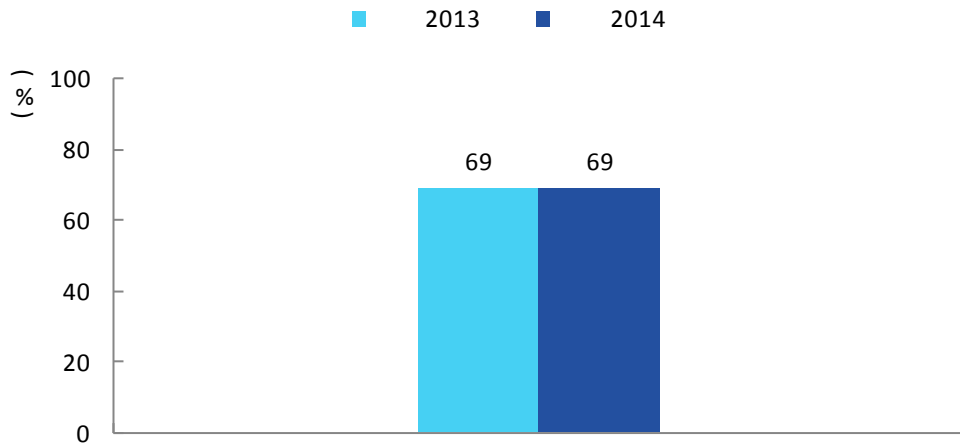
6-5 2014 %



6-6 2014 %

2014 “  
 ” “ ” 47% “ ” “  
 44% “ ” “  
 ” 53% “  
 / ” 51% “ ”  
 48% “ / ”

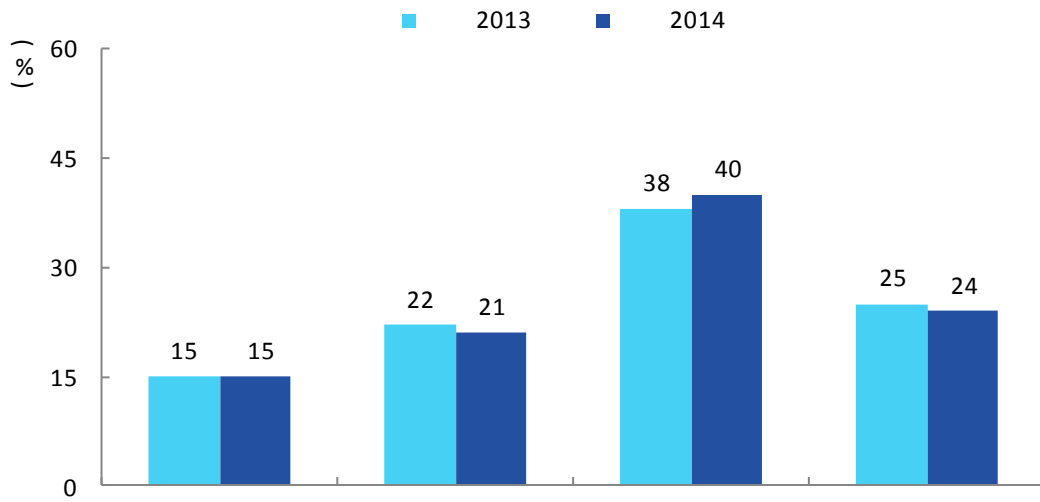




6-8 2014

3.

2014 36% “ ” “  
 ” 2013 37%



6-9 2014

1.

“ ” 2004 49

“

”

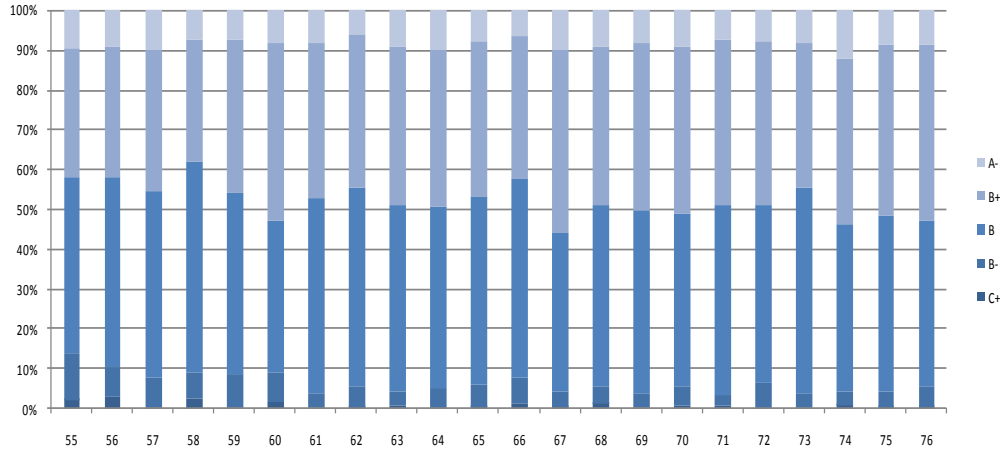
2016 3

76

55 - 76

2012 9 -2015 3

6-9

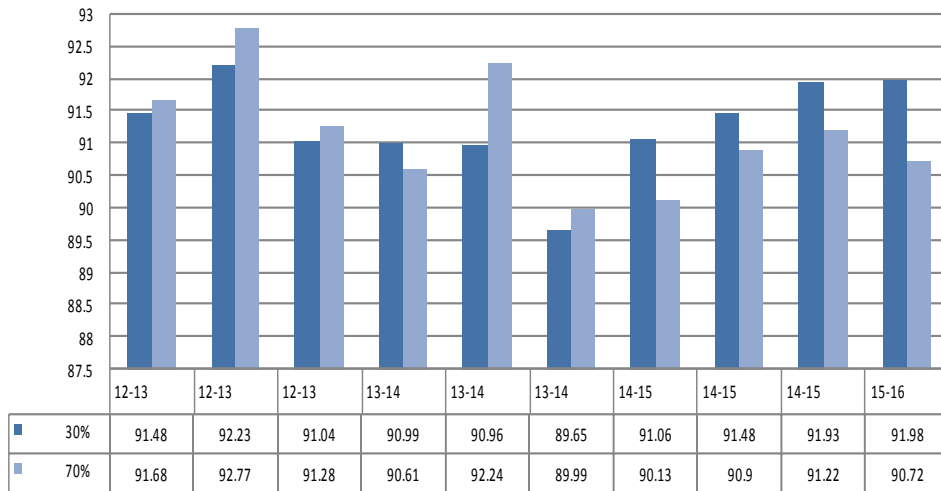


6-10

55-76

A:95-100 A-:90-94 B+: 85-89 B:80-84 B-:75-79 C+:70-74 C:60-69 D:<60

6-10

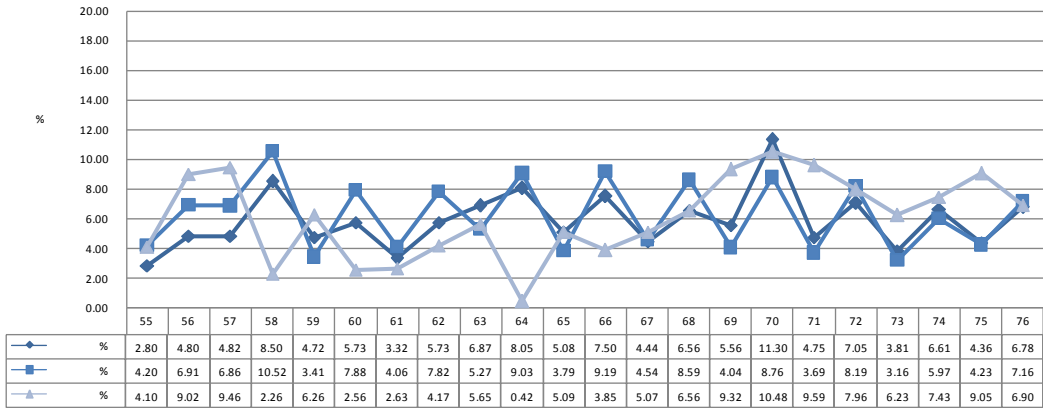


6-11 2012-2015

2.

2012-2015

55-76



6-12

55-76

2004

“ ”

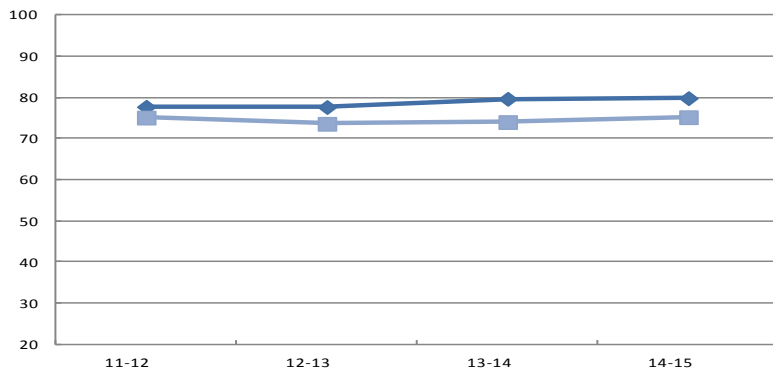
3.

2009-2010

2014-2015

80

30



6-13

2011-2015

2011-2015

7 - 10

---

2015

“ ”

2015

2015

“ ”

**1.**

**2.**

**3.**

**4.**

---

5.

1.

2.

3.

“ ”

4.